

# Emergency Escape Plan.



Engineered for life safety!

## BS ISO 23601:2020

Safety identification. Escape and evacuation plan signs.

BS ISO 23601 is an International Standard which establishes design principles for displayed escape plans that contain information relevant to fire safety, escape, evacuation and rescue of the facility's occupants. These plans may also be used by intervention forces in case of emergency. The plans are intended to be displayed as signs in public areas and workplaces.

### EMERGENCY ESCAPE PLAN

The purpose of escape plans is to help people orient themselves in relation to the planned escape route. In this way, the escape plan complements the facility's safety way guidance system.

Emergency Escape Plan should be designed to conform to BS ISO 23601:2020

### ESCAPE PLAN DETAIL

The escape plan detail shall incorporate:

- All emergency exits and escape routes.
- The point of location of the user ("You are here").
- The location of stairs / lifts.
- Any specific evacuation provisions made available for people with disabilities.
- The location and type of fire equipment and emergency and rescue equipment, e.g. fire alarms, fire extinguisher, fire hoses, first aid equipment.

### OVERVIEW

An overview plan showing details of Evacuation Assembly points.

### SAFETY NOTICES

Escape plans shall always be associated with fire and emergency safety notices which may be on the escape plan or displayed in proximity to the escape plan.

### LEGEND

All escape plans must show a legend explaining the meaning of safety signs, graphical symbols and colour coding used on the plan.

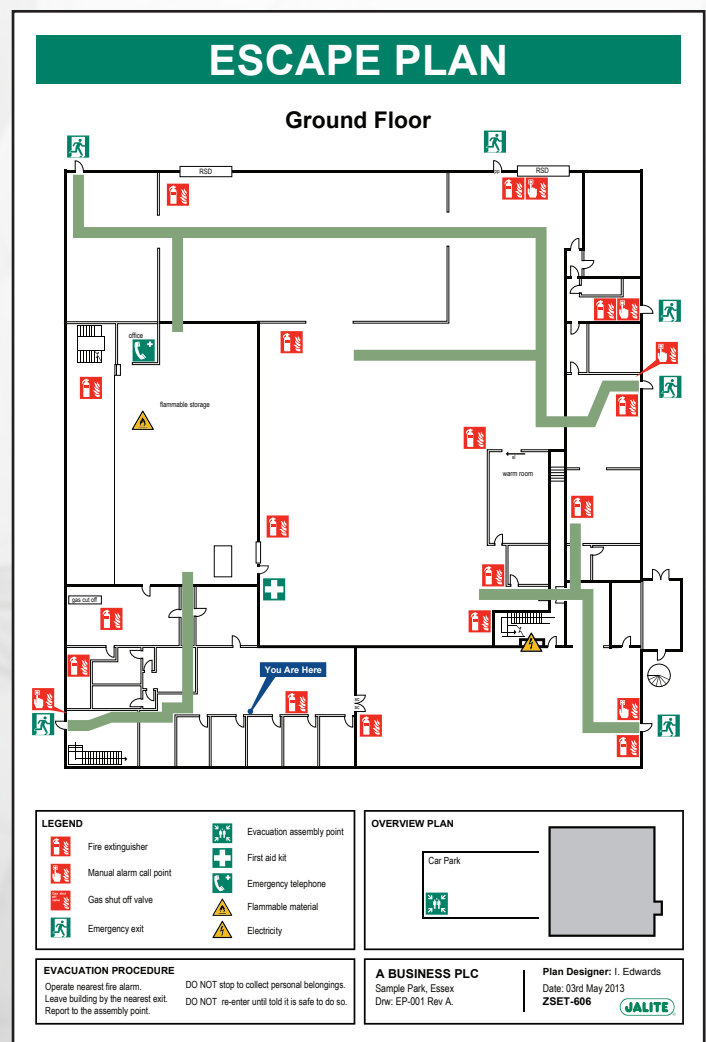
### OTHER INFORMATION

The following information shall be part of the plan:

- Plan designer.
- Name of the facility.
- Floor designation.
- Date of plan design and revision number.
- Plan number.



Frame colour options:  
Frosted Silver.  
and Black.



Escape plan example.